



LG Escape 3™ Software Update: Android security updates & Fullscreen

Overview:

Effective 11/4/16, a new software update (version k37310d) will be available for those LG Escape 3 users who have software version k37310c on their phone. This update will add recommended Android security patches and the Fullscreen application. LG will push this software update to customers, prompting them to install the software update to their device.

What is Fullscreen?

With the Fullscreen app, enjoy a new world of endless entertainment that's always ready to watch and always by your side.

- Users can enjoy 1,500+ hours of content perfect for every age, every mood, and every situation.
- Indulge your nostalgic side with classic movies and your beloved 90s TV shows.
- Find new shows to love and binge watch from original digital series featuring your favorite stars and exclusive content that's added every day.
- Fullscreen delivers endless entertainment, curated for you and available on your connected devices. For more information, visit www.fullscreen.com

Software Download/Additional Information:

- Software can only be downloaded via Wi-Fi.

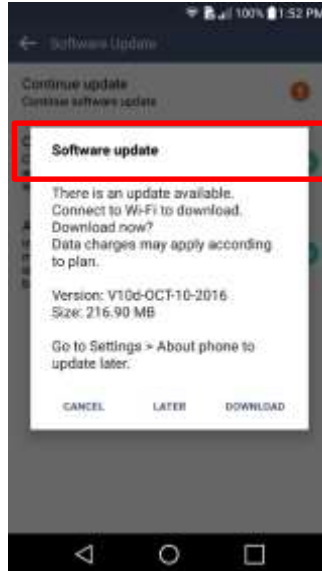
Getting Started:

Before proceeding with the update, make sure you have confirmed the following:

- Make sure that all tasks have been saved. During installation, the phone will not be operable till the installation is completed.
- Confirm that you are connected to Wi-Fi.
- Make sure that the battery is charged to at least 40%.

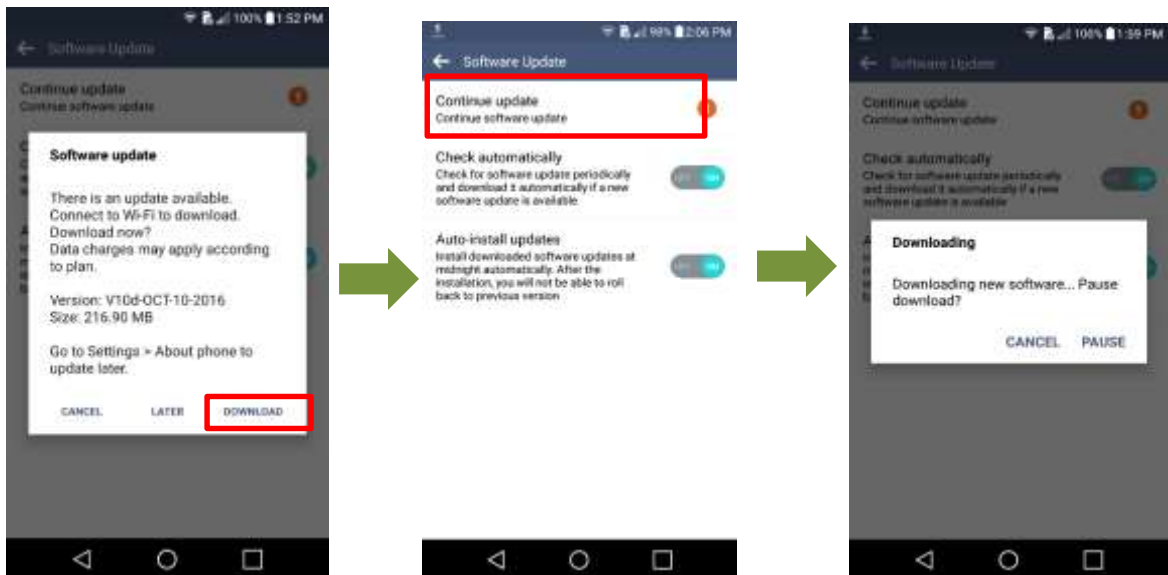
Update Process:

1. Device receives notification regarding the software update

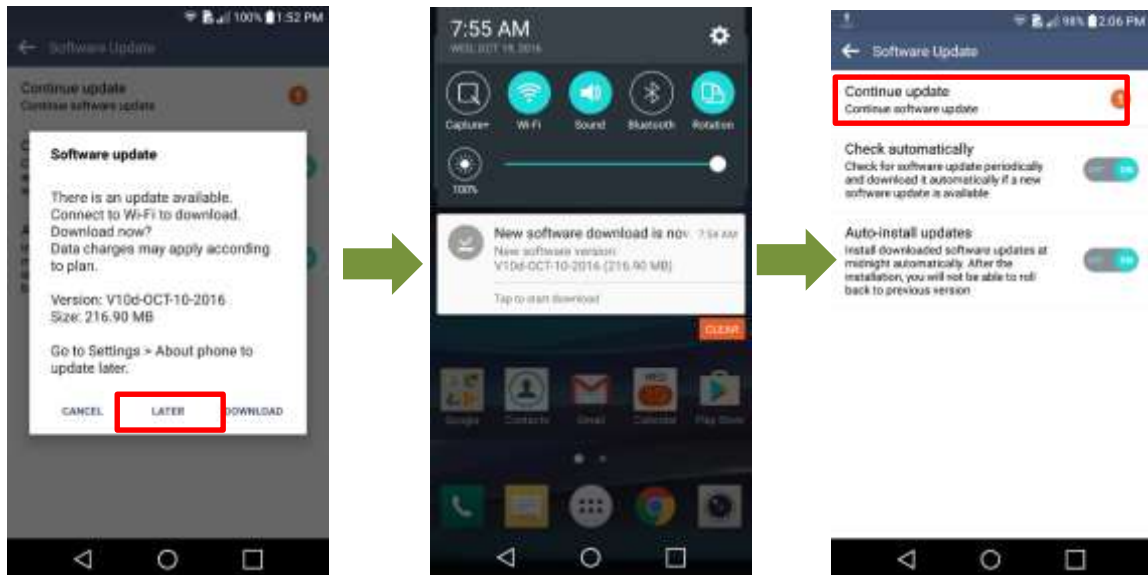


2. Customer has option to download immediately or postpone until a later time.

To download immediately:



To postpone downloading:



After postponing, users will have option to install by accessing update via notification panel

3. Once the installation is complete, the device will re-start and you will see a confirmation message, indicating the successful update.





Verifying Software Version

Below are the steps to check your software version and to manually update the software to the new version (k373v10d).

To check your SW version:

1. From the home screen, touch **Settings**.
2. Touch the **General** tab at the top of the display
3. Scroll down and touch **About phone**.
4. Look under **Software info** which will list the software version. If you are on software version k37310c, you can update to version k37310d.

To manually update the SW:

1. From the home screen, tap the **Apps** icon
2. Tap **Settings**.
3. Tap **General**
4. Tap **About Phone**
5. Touch **Software Update**
6. Tap **Check now for update**